

FST210-series

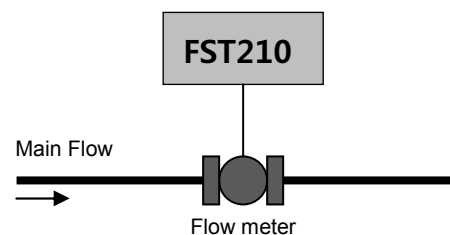
Turbine flow meter

FST210 ▶▶▶



Feature

- 304ss or 316ss sensor & body
- High pressure and temperature Capability
- 2 x 12 character, LCD
- Exd II B T6 enclosure
- Fully scaleable 4 to 20mA output
- Simple insertion design



Applications

- Industry process water
- Pure water and chemical production
- Filtration system
- Cooling system
- HVAC system

Turbine flow meter

FST210 ▶▶▶

● For GAS

General

Accuracy ±0.5% of Full Scale

Repeatability ±0.1%

Maximum operating pressure

4mm~25mm 350kg/cm²

25mm~200mm 60kg/cm²

Maximum operating temperature

-20℃~ +120℃ std

Connection NPT, PT, Flange (KS 10k std)

Pickup coil

Type 3wire (±12V) open collector

Transistor sinking (max 300m)

Sine Wave (Coil)

Material

Body 316 SS/304SS

Rotor CD4MCH SS

Rotor Shaft Tungsten Carbide
(Option 316 SS)

Rotor Supports 316SS / 304SS

Bushing Tungsten Carbide
(Option High Density Plastic)

Thrust Ball Tungsten Carbide
(Option 316 SS)

Enclosure

Dimension

75mm(H) x 55mm(W) x 109.5mm(D)

Material Aluminum

Enclosure class Exd II B T6

Internal electronics

The internal electronics consists

Of the model FT-210,FT-220

Flow transmitter mounted directly

On the flow meter

Display

2- line 12-character LCD

Fully programmable for rate, Total
and accumulated total

Operation Temperature

-0 to 55 °C

Power

DC 24v 6VA or AC 110 ~ 220 or Battery

Output

Pulse open collector

Analog 4-20mA / non isolated

Relay high and low(Option)

Standards and Approvals

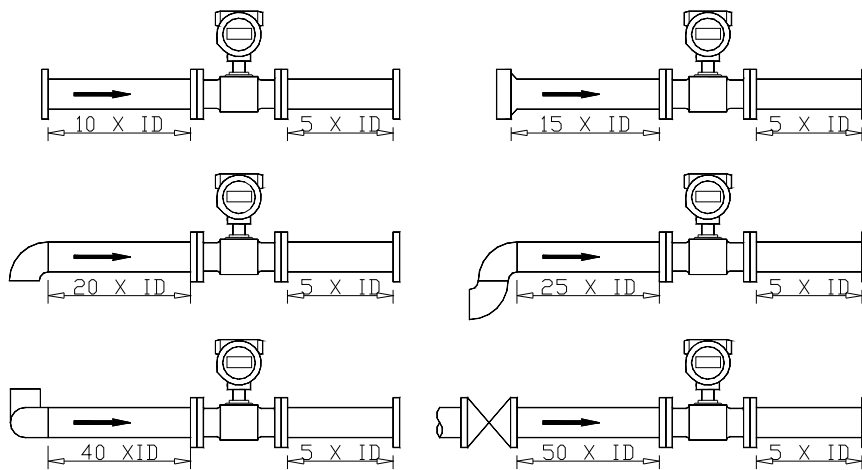
CE

Manufactured under **ISO 9001**

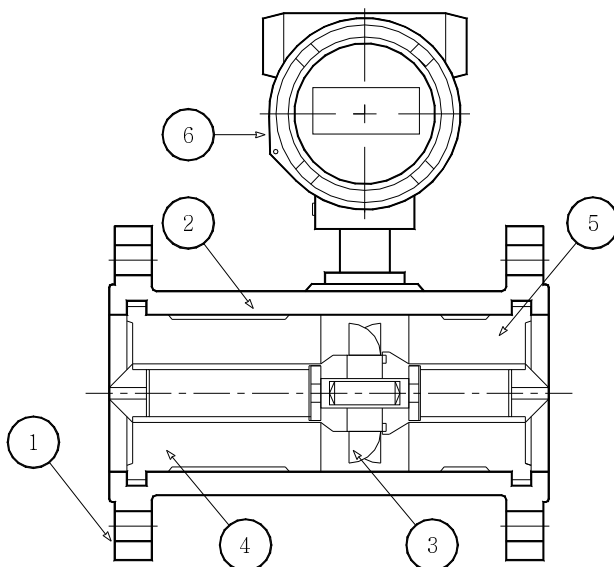
Turbine flow meter

FST210 ▶▶▶

Installation guide



Structures & materials



	Part name	Material
1	Flange	304SS
2	Housing	304SS
3	Van Wheel	304SS
4	Front Guide	304SS
5	Read Guide	304SS
6	Transmitter Housing	Aluminum

Turbine flow meter

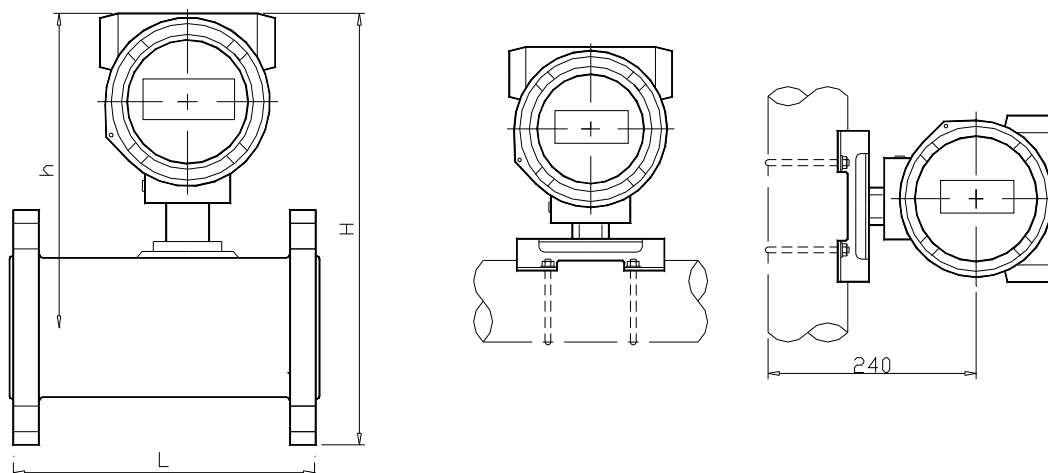
FST210 ▶▶▶

Size Charts

Model	Size (mm)	Flow Range (m ³ /h)Liquid	Flow Range (Nm ³ /h)GAS	L (mm)	G (Connection)
006	6	0.06 ~ 0.60			Flange or PT(F)
010	10	0.12 ~ 1.20			Flange or PT(F)
015	15	0.4 ~ 4.00	2.0 ~ 7.00	150	Flange or PT(F)
025	25	1.00 ~ 10.00	4.0 ~ 40.00	150	Flange
032	32			150	Flange
040	40	2.00 ~ 20.00	8.0 ~ 80.00	150	Flange
050	50	4.00 ~ 40.00	16.0 ~ 160.0	150	Flange
065	65	8.00 ~ 80.00		175	Flange
080	80	10.0 ~ 100.0	34.0 ~ 340.0	200	Flange
100	100	20.0 ~ 200.0	50.0 ~ 500.0	220	Flange
125	125	25.00 ~ 250.0		220	Flange
150	150	30.0 ~ 300.0		300	Flange
200	200	80.0 ~ 800.0		360	Flange
250	250	100 ~ 1000		400	Flange
300	300				Flange

Dimension

Model (FST)	004	006	010	015	025	040	050	065	080	100	150	200	250	500
L(mm)	Order made			150	150	150	150	175	200	150	300	360	400	500
H(mm)	Order made													



Turbine flow meter

FST210 ▶▶▶

Ordering Information

Model	Specification Code							Description
FST	L							Normal Specification Type(For Liquid)
	G							For GAS
	4 mm~ 200mm							Size (4, 6, 10, 15, 25, 40, 50, 80, 100, 150, 200, 250mm)
		J A S						Connection KS 10K (RF) ANSI 150# Screw
			1 2					Material SS 304 SS 316
				S R N				Display Integral Rate and Total Local Rate and Total, Pipe Mounting Pulse Only
					A R			Output 4 ~ 20mA and Pulse 4 ~ 20mA and Pulse, 2-Relay
						S		Explosion Exd II B T6 (STD)
							A D B	Power AC110~220V (Free Voltage) DC 24V Battery Powered