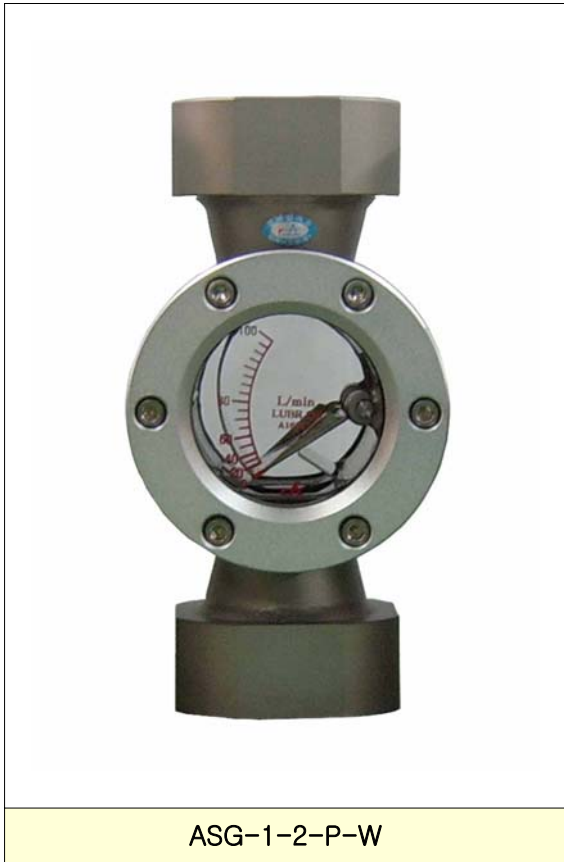




Flowmeter Product Directory

MODEL : ASG



ASG-1-2-P-W

FEATURES

- 본 제품은 유체의 흐름을 감시하거나 측정할 경우 적합하다.
- 유체의 흘러가는 양을 관찰할 수 있고 유량표기를 선택할 수 있다.
- 유체 흐름 방향에 제한이 없으며 특히 점도가 큰 액체에서도 사용 가능하다.

SPECIFICATION

CON'N	SIZE	MAT'L	PRESS.	TEMP.	ACCURACY
SCREW	1/2" - 2"	STEEL	MAX 20kgf/cm ²	MAX 120℃	FS ±2.5%
		SUS304			
		SUS316			

MODEL CODE

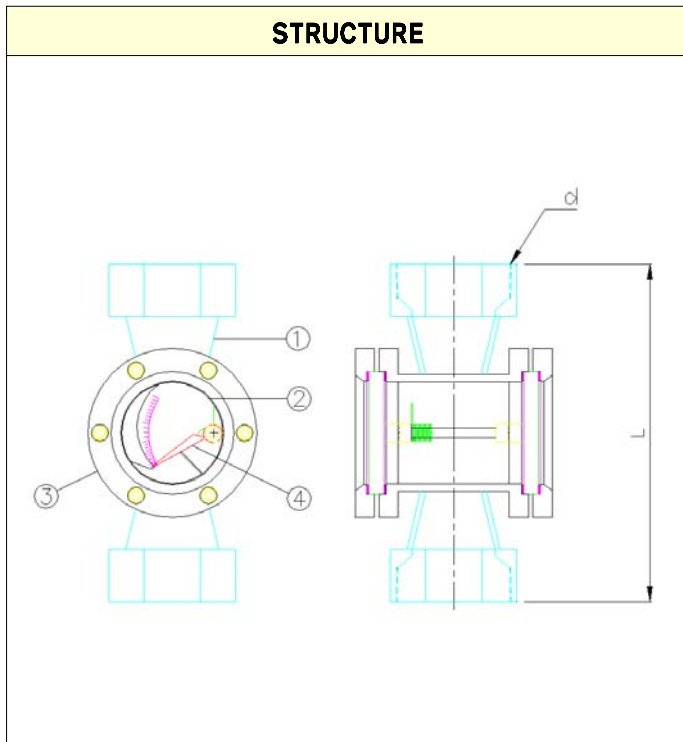
ASG	-	□	-	□	-	□			DESCRIPTION
FLOW DIRECTION		1							BOTTOM - TOP
		5							SIDE - SIDE
		6							TOP - BOTTOM
MATERIAL				1					STEEL
				2					SUS304
				3					SUS316
				0					OTHER
CONNECTION						P			PT(Male / Female)
						N			NPT(Male / Female)
						0			OTHER
ACCESSORY							W		WITHOUT
							V		VALVE (NEEDLE, BALL)
							0		OTHER



Flowmeter Product Directory

MODEL : ASG

FLOW RATE					
SIZE(d) \ DIVIDE		ALLOW RANGE		LIMIT	LENGTH (mm)
		H ₂ O (l/min)	AIR (N ^m /h) 0.5 kgf/cm ² G · 20℃	kgf/cm ²	L
15A	1/2B	3-15	6-30	10	100~150
		5-25	10-50		
20A	3/4B	4-20	8-40	10	100~150
		6-30	12-60		
25A	1B	8-40	12-60	10	100~150
		14-70	30-150		
32A	1 1/4B	14-70	16-80	10	100~200
		20-100	40-200		
40A	1 1/2B	20-100	40-200	10	100~200
		30-150	60-300		
50A	2B	30-150	60-300	10	100~200
		50-250	90-450		



PART LIST

NO	NAME	MATERIAL		
		NO.1	NO.2	NO.3
1	Body	SS41	SUS304	SUS316
2	Sight	GLASS, ACRYL		
3	Cover	AL2		
4	Flapper	SS41	SUS304	SUS316